



**NORTHERN KARST SYSTEMS  
IN OUR CHANGING ENVIRONMENT**

**5-10 September 2011  
Pinega region of the Arkhangelsk area**

***SECOND ANNOUNCEMENT***

**International Conference dedicated to the 300<sup>th</sup> Anniversary of the birth of M.V. Lomonosov**

**'NORTHERN KARST SYSTEMS IN OUR CHANGING ENVIRONMENT'**

**to be held 5-10 September 2011**

The International Conference 'Northern karst systems in our changing environment' will focus on the problems of northern karst territories, their natural character, details of their genesis and geography, structure and dynamics of karst system components, research on cave glaciation, changes in karst systems under the impact of global climate change and the issues of karst landscape and cave conservation. The conference will be held at the State Nature Reserve «Pinezhsky» near the small town of Pinega in the north of Russia, Arkhangelsk area. During the field excursions participants will be able to see the local gypsum-karst landscape and caves that are the world's single example of north-taiga gypsum karst.

**ORGANIZING INSTITUTIONS**

**Russian Geographical Society**

**UIS Commission on Karst Hydrogeology and Speleogenesis**

**Institute of Ecological Problems of the North, Ural Branch of the Russian Academy of Sciences**

**State Nature Reserve «Pinezhsky», Russia**

**Institute of Geography of the Russian Academy of Sciences**

**Moscow State University, Russia**

**St.-Petersburg University, Russia**

**Ukrainian Institute of Speleology and Karstology**

**McMaster University, Canada**

**Department of Earth Sciences, Bergen University, Norway**

**Natural Sciences Institute of the Perm State University, Russia**

**Permafrost Study Institute, Siberian Branch of the Russian Academy of Sciences**

**Autonomous non-profit organization «Institute of Ecology and Education for Sustainable Development»**

**PROGRAMME AND ORGANIZING COMMITTEES**

**Programme Committee Co-Chairmen**

***Kirill Chistyakov***, Prof., Doc. Geograph. Sci., Vice-President of Russian Geographical Society, Head of Dept. of Physical Geography and Landscape Planning, St.-Petersburg

***Aleksandr Klimchuk***, Cand. Geo.-Miner. Sci., Director of the Ukrainian Institute of Speleology and Karstology of the Ukrainian Ministry of Education and Science and Ukrainian Academy of Sciences, Chairman of the Commission on Karst Hydrogeology and Speleogenesis of the Union International of Speleology, Simferopol, Ukraine

***Derek Ford***, Emeritus Professor of Geography and Earth Sciences, Ph.D., McMaster University, Canada

**Programme Committee Vice-Chairmen**

***Konstantin Bogolitsyn***, Prof., Doc. Chem. Sci., Director of the Institute of Ecological Problems of the North, Ural Branch of the Russian Academy of Sciences, Arkhangelsk

***Arkadii Tishkov***, Prof., Doc. Geog. Sci., Vice-Director of the Institute of Geography, Russian Academy of Sciences, Moscow

***Stein-Erik Lauritzen***, Professor, Ph.D., Quaternary Uranium-Series Laboratory, Department of Earth Science, Bergen University, Norway

## **Programme Committee Members**

**Bulat Mavlyudov**, Cand. Geo. Sci., Chairman of the Speleology and Karstology Commission of the Russian Geographical Society, Moscow Branch, Russia

**Nikolai Maksimovich**, Cand. Geo.-Miner. Sci., Vice Director of the Natural Sciences Institute of the Perm State University, Russia

**Yurii Lyakhnitskii**, Doc. Geo.-Miner. Sci., Leading Researcher of the Karpinsky All-Russia Research Geological Institute, Chairman of the Speleology and Karstology Commission of the Russian Geographical Society, St-Petersburg Branch, Russia

**Elena Shavrina**, Cand. Geo.-Miner. Sci., Chief Geologist of the State Nature Reserve «Pinezhsky», Pinega, Russia

**Andrei Semikolennykh**, Cand. Bio.Sci., Senior Lecturer at the Soil Science Faculty of the Moscow State University, Russia

## **Secretariat of the Organizing Committee**

**Andrei Semikolennykh** (Moscow State University) – Lead Organizer

**Elya Zazovskaya** and **Inga Spiridonova** (Inst. of Geography, Rus. Acad. Sci.)

**Stanislav Iglovskii** (Inst. of Ecological Problems in the North, Ural Branch, Rus. Acad. Sci.)

**Nikolai Frants** (Arkhangelsk Speleological Section «Labirint»)

**Elena Shavrina** (State Nature Reserve «Pinezhsky»)

**Melina Minina** (Moscow State Geological Prospecting University after named Sergo Ordzhonikidze)

## **CONFERENCE SESSIONS**

### ***1. Karst development and cave formation in cold climates***

- Geology and hydrogeology
- Palaeogeography
- Cave glaciation, cryogenic phenomena within karst areas
- Mineralogy and ontogeny of ice formations and cryogenic features
- Karst as a factor of landscape organization

### ***2. Land Use and human impact within northern karst systems***

- Building and land use within karst territories
- Results of technogenic impacts on karst systems
- Cave use regulations
- Karst as a factor of regional economic development

### ***3. Biology of cave organisms at low temperatures***

- Biodiversity and biogeography of northern caves
- Mechanisms of adaptation to low temperatures
- Cave ecosystem ecology

### ***4. Recreation and ecological education within northern karst areas***

- Information provision for ecological education purposes
- Limiting cave and karst landscape visitor numbers
- Creation of ecological footpaths
- Protection of caves and karst features
- Museum establishment and management

## **PRELIMINARY CONFERENCE TIMETABLE**

**5 September.** Gathering of participants in the town of Arkhangelsk. Travelling by coach to the conference venue of Golubino, stopping on route to visit the open-air wooden architecture museum of 'Malye Karely'.

**6 September.** Registration of participants. Opening of the Conference. Plenary presentations. Reception banquet and brief presentation about the Pinega Region. Video films.

**7 September.** Plenary presentations and thematic sessions. Excursion to the 'Golubinsky Proval' cave and to the karst canyon.

**8 September.** Thematic sessions and poster presentations.

**9 September.** Field excursion. Evening picnic with bonfire and barbeque.

**10 September.** Participants travel back to Archangelsk by coach.

## **ON-LINE REGISTRATION OF PARTICIPANTS**

On-line registration is open at the Conference web-site: <http://agora.guru.ru/cold-karst-2011/>.

If you have any problems with web-site access, please don't hesitate to contact us: [cold-karst-11@mail.ru](mailto:cold-karst-11@mail.ru) (the Conference E-mail), [aasemik@list.ru](mailto:aasemik@list.ru) (Andrei, the Lead Organizer), [inga\\_spiridonova@mail.ru](mailto:inga_spiridonova@mail.ru) (Inga, Organizing Committee Member)

Following registration and payment of the organization fee the Organizing Committee will personally contact the participants by e-mail to discuss details of their arrival to Arkhangelsk and their choice of accommodation at the conference venue.

## **CONFERENCE LANGUAGES**

Russian and English. Plenary presentations will be accompanied by translation. Conference session presentations can be in either Russian or English, but it is recommended to make any PowerPoint slides in English only.

## **FIELD GUIDE**

A bilingual (Russian-English) local area guide will be issued at the beginning of the Conference.

## **CONFERENCE PROCEEDINGS**

The Conference Proceedings will be issued at the beginning of the Conference. Papers of a maximum of four pages including tables and figures should be written either in Russian with summary in English, or entirely in English. MS Word 2003 is the preferred format. Papers should be submitted on-line or by e-mail by the 15<sup>th</sup> of June 2011.

## **PAPER PRESENTATION**

For oral presentations 20 minutes will be allowed including time for questions and discussion. A PowerPoint Projector will be provided in the Conference hall. Each participant can give only one oral presentation. If too many oral presentations are submitted, the organizing Committee reserves the right to move some oral presentations to the poster session.

During the poster session the participants will be given 5 minutes for a brief comment on their posters. There will be no limit on the size and number of posters.

## **VISA SUPPORT FOR FOREIGN PARTICIPANTS**

### **1. Participants from Schengen countries.**

Participants from Schengen countries should e-mail a scanned image of their passport (main page with photograph) to the Organizing Committee. We shall arrange for an invitation from the Institute of Geography of the Russian Academy of Sciences, which participants will be required to take to the Russian Embassy (or Visa agent) in their country. An original copy of the invitation letter will be posted to the participants by air-mail.

### **2. Participants from other countries.**

#### *a) Tourist visa application*

Participants from other countries should e-mail a scanned image of their passport (main page) to the Organizing Committee. We shall arrange for a 'tourist voucher' from a tourist agency in Russia, which will be needed for submission to the Russian Embassy in the participant's country. The Russian Embassy accepts tourist vouchers sent by fax (please let us know the fax number). An original copy of the tourist voucher will be posted to the participants by air-mail. The cost of tourist voucher is 20 euro.

#### *b) Business visa application*

Applying for a business visa is more complicated. Participants should e-mail a completed visa application form (sent to them upon request) and a scanned image of their passport (main page) to the Organizing Committee. These documents will need to be submitted to the Russian Immigration Office no earlier than 45 days before the participant enters the Russian Federation. The Russian Immigration Office will issue an invitation within 10-14 work days. The invitation will then be posted to the participant by express mail, which will cost 50 euro. Then the invitation letter should be submitted by the participant to the Russian Embassy in their country.

**The Organizing Committee strongly recommends that foreign participants apply for a tourist visa, because applying for a business visa is highly time-consuming and more expensive.**

## **CONFERENCE TRIP DOCUMENTS OF RUSSIAN PARTICIPANTS**

Conference trip documents of Russian participants should be assigned for the State Nature Reserve «Pinezhsky» (town of Pinega) or the Institute of Ecological Problems of the North, Ural Branch of the Russian Academy of Sciences (town of Arkhangelsk).

## **ORGANIZATION FEE**

The conference fee is 250 euro, which includes return coach travel from Arkhangelsk to the «Pinezhsky» Reserve, all excursions, opening and closing dinners (banquet and picnic), packed lunch for the day-long excursion, the Field Guide and Conference Proceedings. Accommodation costs will be paid separately on arrival at the conference venue.

The organization fee should be paid via wire transfer **by the 1<sup>st</sup> of August 2011**. The account details are given below:

**Beneficiary: Semikolennykh Andrei Aleksandrovich**

**Account number: 40817978901000985461**

**Bank: ZAO Raiffeisenbank. SWIFT: RZBMRUMM**

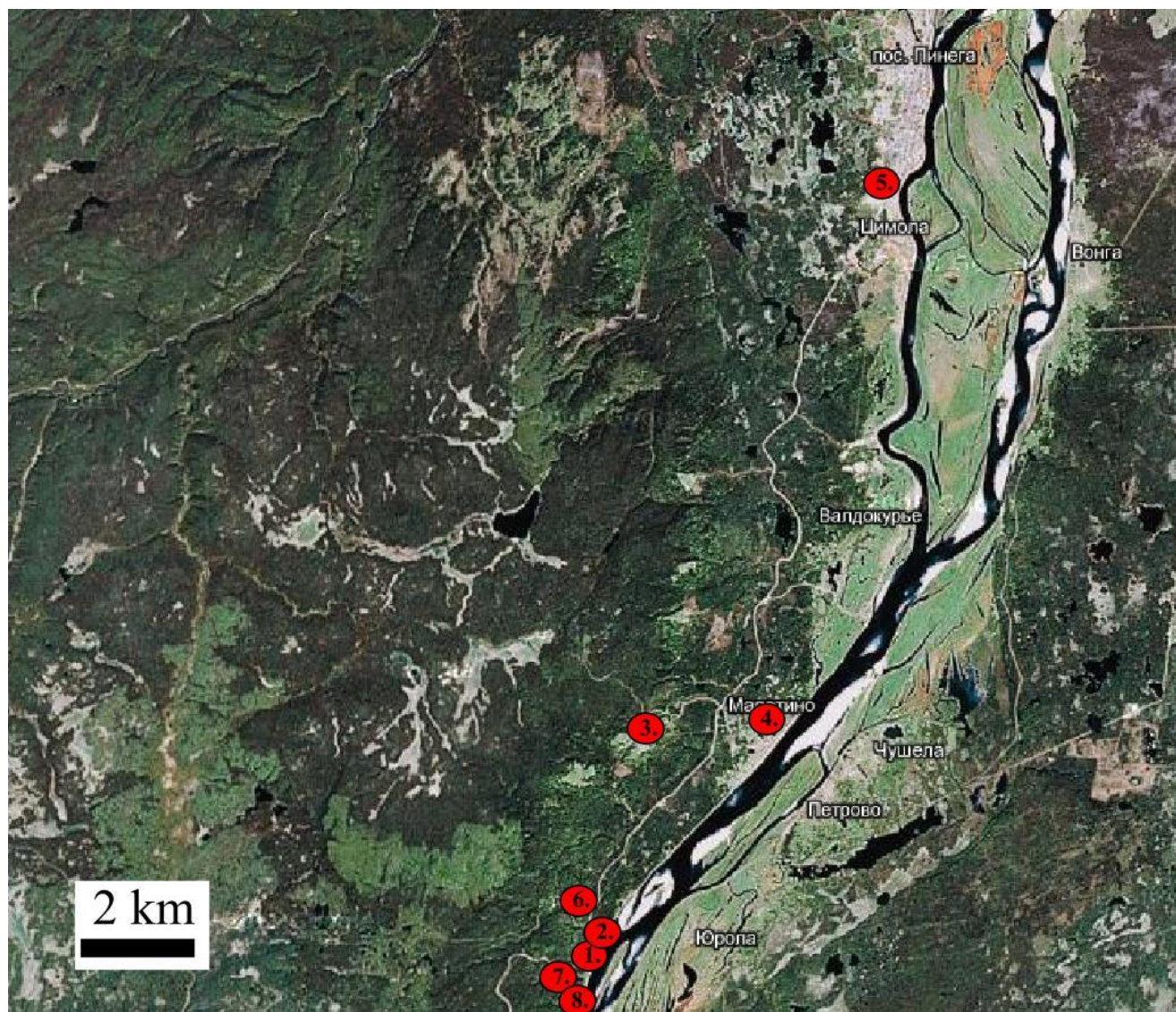
**Intermediary bank: Raiffeisen Bank International AG. SWIFT: RZBAAT WW. Acct. No 001-55.025.928**

**Details of payment: Organization fee from [name and surname].**

## **CONFERENCE VENUE AND TRANSPORT**

The conference venue is located in a rural setting in the villages of Golubino and Krasnaya Gorka by the State Nature Reserve «Pinezhsky» (about 120 km east of Arkhangelsk). The participants gather in the town of Arkhangelsk around mid-day of September 5 and travel by coach to the conference venue (c. 4.5 hours). The participants will travel back to Arkhangelsk by coach on the afternoon of September 10.

For those participants who will travel through Moscow the Organizing Committee can book Moscow-Arkhangelsk train tickets. The train will depart from the Yaroslavsky train station of Moscow on the 4<sup>th</sup> of September at 12:00 noon, arriving at Arkhangelsk on the morning of 5<sup>th</sup> September.



1 – "Golubino" hotel (wooden chalet and cottages), 2 – the State Nature Reserve "Pinezhsky" complex, 3 – "Krasnaya Gorka" hotel and conference hall, 4 – "Maletino" village, 5 – the town of Pinega, museum of the State Nature Reserve "Pinezhsky", 6 – "Tarakanii" karst canyon, 7 – "Golubinsky proval" cave, 8 – "Bol'shaya Golubinskaya" cave.

## **LOCAL NATURE AND WEATHER CONDITIONS**

The Pinega Region is a picturesque northern province located in the north-west of the European part of Russia (c. 64° North lat., 43° East long.) by the Pinega River in the Arkhangelsk area. Karst landscapes on gypsum rocks occur by the middle and low reaches of the Pinega River. Spruce and spruce-birch forests generally dominate within the Pinega Region, pine-larch forests occur in karst landscapes and secondary birch forests within felled areas. The Region is characterized by a cold humid moderately continental climate. Winter is long and cold; summer is short, moderately warm and cloudy; spring and autumn are long, with frequent temperature fluctuations. In the early September we expect the weather to be moderately warm (about +12 +15°C day-time) with possible showers. The participants are recommended to bring a waterproof coat and boots for field excursions and cave visits.

## ACCOMODATION

### In Moscow and Arkhangelsk

For those participants who will travel through Moscow or need to stay in Arkhangelsk the Organizing Committee can book a hotel. Meeting of foreign participants in Moscow or Arkhangelsk can be organized. Please contact the Organizing Committee to discuss these issues.

### Accommodation at the conference venue

The location of accommodation sites and the conference hall are shown in the figure above.

#### **Option 1.**

The "**Golubino**" hotel (wooden chalet and cottages) is located very close to the karst massif at the Pinega River bank. The wooden chalet at Golubino has all conveniences including bar, restaurant and sauna. The location is ideal for acquaintance with the picturesque countryside. The distance to the nearest cave is 500 metres. The hotel also offers its own programme of small excursions. Estimated accommodation costs for the period from the 5<sup>th</sup> to 10<sup>th</sup> of September: twin room in the chalet at Golubino – 8100 roubles per person, two-bedded cottage at Golubino – 12200 roubles per person. There are 22 twin rooms in the chalet and 4 two-bedded cottages are available. The accommodation cost includes three meals a day.

The Golubino hotel web-site (in Russian): <http://golubino.com/hotels/golubino/>



#### **Option 2.**

Accommodation in the "**Krasnaya Gorka**" hotel and cottages in the village of Krasnaya Gorka, 5 km from Golubino. The hotel is located on the hill with a beautiful view over the Pinega River. Our conference sessions will be held in the hall of this hotel. The distance to the nearest cave and karst landscapes is about 3-4 km. Estimated accommodation costs for the period from the 5<sup>th</sup> to 10<sup>th</sup> of September: three-bedded room in the hotel – 7000 roubles per person, four-bedded cottage – 14400 roubles per person. There are 13 three-bedded rooms and 5 four-bedded cottages available. The accommodation cost includes three meals a day. The Krasnaya Gorka hotel web-site (in Russian): <http://golubino.com/hotels/krasnaya-gorka/>

#### **Option 3.**

**The State Nature Reserve "Pinezhsky" complex** is just 600 m from the "Golubino" hotel. Accommodation available here includes a wooden house with four two-storied beds in each room and several caravans, all with conveniences outside. The accommodation cost is 120 roubles per person per day. Meals will require additional payments of 1050 roubles for 3 lunches in the hotel and 450 roubles per person for breakfasts and suppers at the complex. There are 21 places in the caravans and 16 places on two-storied beds in the house (8 at the lower and 8 at the higher storey).



**Option 4.** (will be organized if we have a greater number of participants)

Accommodation in two wooden houses in the village of **Maletino**, which is located at the Pinega River bank 4 km away from Golubino and 5 km away from Krasnaya Gorka. There are two rooms in each house, 2-4 beds per room and toilet outside. The conditions are more comfortable than at the Reserve "Pinezhsky" complex, but there are disadvantages – Maletino is further away from the conference hall and the other participants housing. The accommodation cost is pending confirmation.

### **EXCURSIONS**

Open-air wooden architecture museum of 'Malye Karely', c. 2-3 hours.

A common excursion on the route from Arkhangelsk to the conference venue with a professional guide from the museum.

Gypsum karst cave and a karst canyon by the conference venue, c. 2hours.

A local walk in the vicinities of Golobino. Participants will be divided into two groups that will successively visit the cave and canyon.

Surface and underground gypsum karst of the Nature Reserve «Pinezhsky», c. 8 hours.

A day-long excursion that will involve a coach trip and walk in a remote karst area. The participants will be offered two alternative options. First option: the karst museum of the Pinezhsky Reserve – walk in karst landscapes and visit the largest cave of the Pinega Region (Kulogorskaya Cave). Second option: visit to a karst spring – the Pinezhsky Reserve museum – walk in karst landscapes and visit a cave in the "Iron Gate" Reserve area. A packed lunch is included in both options.

### **DEADLINES**

**15 June 2011** – abstract submission closed

**1 August 2011** – registration of participants without reports closed

**5 September 2011** – the opening day of the Conference

### **SECRETARIAT ADDRESS AND CONFERENCE WEB-SITE**

The conference e-mail: **cold-karst-11@mail.ru**

The conference web-site: **<http://agora.guru.ru/cold-karst-2011/>**

Andrei Semikolennykh (general questions)

Phone: +7 (910) 453 75 25

E-mail: **aasemik@list.ru**

Inga Spiridonova (general questions)

E-mail: **inga\_spiridonova@mail.ru**

Melina Minina (conference proceedings)

E-mail: **melina777@mail.ru**

Elya Zazovskaya (visa support)

E-mail: **zazovsk@rambler.ru**